

*Mossy Creek Middle School*



*Parent Handbook*

2011-2012

## Table of Contents

|  |            |
|--|------------|
| <b><i>The School –</i></b>                                       |            |
| Mission Statement/Core Values                                    | Page 3     |
| Our Mascot   | Page 4     |
| Faculty and Staff  | Page 5-6   |
| School Phone Numbers   | Page 7     |
| Houston County School System Calendar / Testing Schedule         | Page 7     |
| Reporting Schedule / School Hours / Arrival/ Supervision         | Page 8-9   |
| <b><i>The Students</i></b>                                       |            |
| What is the Middle School Concept?                               | Page 10    |
| Characteristics of Middle School Students                        | Page 10    |
| MCMS School Based Guidance Plan                                  | Page 11    |
| Issuing of Textbooks   | Page 11    |
| Media Services - Internet Policy                                 | Page 12-13 |
| <b><i>The Parents-</i></b>                                       |            |
| Parent/Community Involvement, Student Agenda, Reporting          | Page 14    |
| Parent Volunteer Guidelines                                      | Page 14    |
| Business Partners  | Page 15    |
| Ten Things Teachers Wish Parents Could Do                        | Page 16    |
| Things Every Parent Needs to Know                                | Page 16    |
| Parent Conferences / Phone Use/Publicity                         | Page 17    |
| <b><i>The Curriculum -</i></b>                                   |            |
| The Middle School Georgia Performance Standards (GPS Curriculum) | Page 18    |
| Character Education  | Page 21    |
| Grading/ Final Exams/ SMARTWEB/ Homework                         | Page 22    |
| Scholastic Reading Counts/ Conduct Grades                        | Page 23    |
| MCMS - Student Recognition                                       | Page 23-24 |
| <b><i>The Extra-Curricular Activities -</i></b>                  |            |
| Athletics  | Page 25    |
| Extra-Curricular Activities                                      | Page 25-27 |
| <b><i>The Policies –</i></b>                                     |            |
| Attendance:  | Page 28    |
| Attendance Policy  | Page 28    |
| Early Dismissals/Tardies   | Page 28    |
| Book bags/ Nutrition Program                                     | Page 29    |
| Dances/ Deliveries/ Elections/ Lost & Found/ Medication/ Office  | Page 30    |
| <b><i>MCMS Discipline Policy:</i></b>                            | Page 31    |
| Discipline Chart   | Page 32-33 |
| Alternative School/ Bus Policy and Suspensions                   | Page 34    |
| Detention  | Page 37    |
| Dress Code   | Page 38    |
| ISS/OSS/Athletic Rules   | Page 39    |
| Gator Discipline Card  | Page 40-41 |
| Right to Know Letter   | Page 42    |
| <i>Student Schedule Form</i>                                     | Page 43    |

“The secret to success is ...  
there is no secret . . ., you must work hard!”

# Mossy Creek Middle School



## School Beliefs:

We, as educators, consider our role to be the caretakers of society's future. It is our duty to make learning relevant and useful so that students apply their learning in ways that enable them to participate successfully in society. We accept this task with a great sense of responsibility and dedication.

### Mission Statement:

Our mission at Mossy Creek is to promote active learning, academic success, a sense of self-worth, and social responsibility.

## At Mossy Creek Middle School we believe:

- The provision of a welcoming, safe, and orderly environment is fundamental to teaching and learning.
- Appropriate, rigorous learning and success for all is achieved through differentiated instruction.
- The provision of opportunities designed to enhance self-esteem, encourage self-motivation and practice good citizenship is essential to helping children become successful, contributing adults in our society.
- A student's work ethic and demonstration of personal responsibility are paramount to the highest levels of learning.
- On-going professional learning through collaborative communities is vital to providing students high quality instruction.

\*\*\*\*\*

"One can never consent to creep when one feels the compulsion to soar". Helen Keller

# “Our Mascot”



**School Colors: Black and Gold**

## American Alligator

### Taxonomy

Order: Crocodylia

Family: Alligatoridae

Genus/species: *Alligator mississippiensis*

### Description

The average size for an adult female American alligator is 8.2 feet (2.6 m), and the average size for a male is 11.2 feet (3.4 m). Exceptionally large males can reach a weight of nearly half a ton or 1,000 pounds.

Both males and females have an "armored" body with a muscular flat tail. The skin on the back is armored with embedded bony plates called osteoderms or scutes. They have four short legs; the front legs have five toes while the back legs have four toes.

Alligators have a long snout with upward facing nostrils at the end; this lets them breathe while the rest of the body is underwater. The young can be distinguished from adults by the bright yellow stripes on the tail; adults have dark stripes on the tail.

***MOSSY CREEK MIDDLE SCHOOL***  
**2011-2012 Faculty and Staff**

**Paige Busbee, Principal**

Olethia Thomas, Assistant Principal  
 Andy Gentry, Assistant Principal  
 Mark Sams, Athletic Director  
 Jeri Thompson, Counselor  
 Val Moss, Counselor

Betsy Roth, Media Specialist  
 Tammy Mims, Cafeteria Manager  
 Sue Moore, Secretary/ATS  
 Shonia Laumann, Bookkeeper  
 Jennifer Fulton, Receptionist/Records Clerk

**Sixth Grade Academic Teams**

**6A**

LA Charissa Grubbs 604\*  
 SS Lisa Giles 606  
 MA Kevin Coulombe 608  
 SC Faith Terry 610  
 620\*

**6B**

MA Kasey Mixon 617  
 LA Lisa Trayler 618  
 SS Shelly Collins 619  
 SC Jana McMillan

**Seventh Grade Academic Teams**

**7A**

SC Laura Lee McCranie 702  
 MA Sherri Shaw 703\*  
 LA LaNell Waller 704  
 SS Heather Adams 706

**7B**

SS John Gill 714  
 MA April Roberts 715 \*\*  
 LA Natalie Rainwater 716  
 SC Tammy Kothe 717\*

**Eighth Grade Academic Teams**

**8A**

SC Jenny Gutshall 804  
 MA Ashley Veline 806  
 LA Catherine Gardner 807\*\*  
 SS Donna Burner 809\*\*

**8B**

SS Scott Farrell 817  
 MA Nikki Carroll 818  
 LA Tina Wilkinson 819  
 SC Teresa Wall 820 \*

\* Indicates Team Leader    \*\* Indicates Department Head

**Honors Education**

|       |                   |      |
|-------|-------------------|------|
| LA    | Ramona Grubbs     | 815  |
| LA    | Tambra Singletary | 712* |
| SC    | Floyd Jolley      | 609  |
| SC    | Carol Kohn        | 718  |
| MA    | Tammy Strickland  | 810  |
| MA    | Kaitlin Rainey    | 605  |
| MA/SC | Jennifer Davidson | 805  |
| MA    | Mary Biggs        | 712  |

**Special Education Teachers**

|                  |      |
|------------------|------|
| Angela Cutie     | 308  |
| Anna Parrish     | 310  |
| Kristi Rigdon    | 312* |
| Kathy Lamonte    | 314  |
| Shannon Williams | 602  |
| Rod Brezial      | 603  |
| Susan Wangen     | 614  |
| Jackie Singleton | 615  |
| Julie Bragg      | 711* |
| Leslie Smith     | 814  |

**ESOL Teacher**

|             |     |
|-------------|-----|
| Jane Schoch | 314 |
|-------------|-----|

**Speech**

|              |     |
|--------------|-----|
| Chad Smith   | 822 |
| Piper Haymen | 822 |

**ISS**

|              |     |
|--------------|-----|
| Jay Holliday | 803 |
|--------------|-----|

**Network Technician**

Charleen Thigpen

**Connections**

|      |                   |      |
|------|-------------------|------|
| PE   | Mark Sams         | GYM  |
| PE   | Joey Brett        | GYM  |
| PE   | Amy Gautney       | GYM  |
| ART  | Madeline McNiell  | 307  |
| BAND | Philip Washington | 401* |
| COMP | Robin Fobbus      | 306  |
| F CS | Kadie Staines     | 301  |

**Paraprofessionals**

|                |             |
|----------------|-------------|
| Pam Aiken      | 310         |
| Kedra Gay      | 312         |
| Pat Lewis      | 312         |
| Shemika Nieves | 602         |
| Betty Davis    | 711         |
| Rachel Micko-  | Interpreter |

**Medical Technician**

Kim Martin

**Custodians**

Dawn Horn, Lead  
Helen Beatty  
Bernice Milton

**School Phone Numbers:**

|                        |   |
|------------------------|---|
| School                 | (478) 988-6171 Press 0 for receptionist |
| School Secretary       | (478) 988-6171 Ext. 40551               |
| School Guidance Office | (478) 988-6171 Ext. 40555               |
| School FAX             | (478) 218-7538                          |

**2011-2012 Houston County School System Calendar**

|   |  |
|---|--|
| <b><u>August 1, 2011 (Monday)</u></b>     | <b>First Day of School</b>             |
| September 5, 2011 (Monday)                | Labor Day Holiday                      |
| October 3, 2011 (Monday)                  | Professional Learning, Student Holiday |
| October 4 -7, 2011 (Tuesday-Friday)       | Fall Break, Students & Teachers        |
| October 10, 2011 (Monday)                 | Columbus Day Holiday                   |
| November 11, 2011 (Friday)                | Veterans Day Holiday                   |
| November 21-25, 2011 (Monday-Friday)      | Thanksgiving Holiday                   |
| <b><u>December 16, 2011 (Friday)</u></b>  | <b>Last Day of Semester</b>            |
| December 19-30, 2011 (Monday-Monday)      | Christmas Holiday                      |
| January 3, 2012 Second (Tuesday)          | Semester Begins                        |
| January 16, 2012 (Monday)                 | Martin Luther King, Jr. Holiday        |
| February 20, 2012 (Monday)                | Presidents' Day Holiday                |
| February 21 - 23, 2012 (Tuesday-Thursday) | Winter Break, Students & Teachers      |
| February 24, 2012 (Friday)                | Professional Learning, Student Holiday |
| April 2 - 6, 2012 (Monday-Friday)         | Spring Break                           |
| <b><u>May 25, 2012 (Friday)</u></b>       | <b>Semester Ends</b>                   |

**Middle School Testing (Standardized & School) Schedule 2011-2012**

| Date                  | Day                    | Test                                  | Grade   |
|-----------------------|------------------------|---------------------------------------|---|
| <b>December 15-16</b> | <b>Thursday-Friday</b> | <b>1<sup>st</sup> Semester Finals</b> | <b>7<sup>th</sup> &amp; 8<sup>th</sup> Grades</b> |
| September 6-March 30  | Tuesday-On-Going       | GAA                                   | Special Services                                  |
| <b>January 17</b>     | <b>Tuesday</b>         | <b>ACCESS</b>                         | <b>ELL Students</b>                               |
| January 18            | Wednesday              | Writing Assessment                    | 8 <sup>th</sup> Grade                             |
| <b>January 19</b>     | <b>Thursday</b>        | <b>Writing Assessment Make- up</b>    | <b>8<sup>th</sup> Grade</b>                       |
| April 10-13 & 16      | Tuesday-Monday         | CRCT-M                                | 6 <sup>th</sup> – 8 <sup>th</sup> Grade           |
| <b>April 16-20</b>    | <b>Monday-Friday</b>   | <b>CRCT Administration</b>            | <b>6<sup>th</sup> -8<sup>th</sup> Grade</b>       |
| April 23-26           | Monday-Thursday        | CRCT Make-ups                         | 6 <sup>th</sup> – 8 <sup>th</sup> Grade           |
| <b>May 21-22</b>      | <b>Monday-Tuesday</b>  | <b>CRCT-M and CRCT Retesting</b>      | <b>8<sup>th</sup> Grade</b>                       |
| May 24 – 25           | Thursday-Friday        | 2 <sup>nd</sup> Semester Finals       | All Grades  |

**Please make every effort to have students in attendance, barring illness, during standardized testing & final exams!**

## Middle School Reporting Schedule 2011-2012

| <b>Nine Week Period</b>                            | <b>End Date</b>     | <b>Date Report Issued</b> | <b>Day</b>       |
|--|---------------------|---------------------------|------------------|
| Progress Report, Day 22                            | August 30           | September 1               | Thursday         |
| <b>1<sup>st</sup> 9 weeks Report Card, Day 44</b>  | <b>September 30</b> | October 13                | <b>Thursday</b>  |
| Progress report, Day 66                            | November 9          | November 14               | Monday           |
| <b>2<sup>nd</sup> 9 weeks Report Card, Day 87</b>  | <b>December 16</b>  | January 6                 | <b>Friday</b>    |
| Progress report, Day 110                           | February 3          | February 7                | Tuesday          |
| <b>3<sup>rd</sup> 9 weeks Report Card, Day 133</b> | <b>March 14</b>     | March 21                  | <b>Wednesday</b> |
| Progress Report, Day 156                           | April 23            | April 25                  | Wednesday        |
| <b>4<sup>th</sup> 9 weeks Report Card, Day 180</b> | <b>May 25</b>       | May 25                    | <b>Friday</b>    |

\* **NOTE: No exams will be given early without prior authorization from the Principal.**

### ARRIVAL AND DISMISSAL TO AND FROM SCHOOL

All car riders are to be dropped off and picked up in the gym parking lot.

The school opens at **7:00 A.M.** each morning. Students who are **car riders** should be dropped off and picked up in front of the **gym**. **Students are not to be dropped off or picked up in front of the school between the hours of 6:30 A.M. – 7:30 A.M. or after 2:30 P.M.** Any student entering the front door should be accompanied by a parent or guardian.

**Upon entering through the gym lobby or from the bus ramp**, seventh- and eighth-grade students report to the gym where they will be supervised until the homeroom bell rings at 7:15 A.M. Sixth-grade students will report to the cafeteria until the 7:15 A.M. bell. **No students should be on any other hall or in any other parts of the building prior to 7:15 A.M. Homeroom begins at 7:15 A.M.** and is a very important period. Student attendance is recorded and announcements regarding school activities are made at this time. If for any reason a student arrives to school after 7:30, it is the **student's responsibility to report to the office for an admittance slip** and obtain any information missed.

**At 2:45 P.M.** a bell will sound to dismiss bus riders. **At 2:50 P.M.** a second bell will sound to release car riders to the gym parking lot and late bus riders to the cafeteria. Students will not be allowed to exit the front doors during dismissal.

Any students present after 2:50 P.M. should be with their group, club, teacher, or they should wait for their ride outside of the gym lobby. All students must be picked up no later than 3:30 P.M. unless they are attending a teacher-sponsored activity after school. Students left on campus after 3:30 P.M., who are not attending an official school activity, are unsupervised.

**STUDENTS MAY NOT RIDE OR BRING SKATEBOARDS TO SCHOOL.**

## School Hours and Supervision Overview

School opens at **7:00 A.M.**

- **Car riders and walkers** should be dropped off and picked up in front of the gym, entering at the gym lobby. For the safety of students, please adhere to established traffic routes in the parking lot.
- **Bus riders** enter at the bus entrance.
  - \*Eighth grade students report to the gym until the 7:15 bell.
  - \*Sixth and seventh grade students report to the cafeteria until the 7:15 bell.
- Students, who are not bus riders, are dismissed at **2:45 P.M.** each day and should be picked up in front of the gym immediately upon dismissal *No loitering on the campus is permitted!*
- **CO-CURRICULAR EVENTS:**

Athletic events both home and away are usually finished at 6:45 P.M., but no later than 7:00 P.M.

Please make arrangements for pick up *before allowing your student to attend after-school activities or athletic events.*

### **NOTICE**

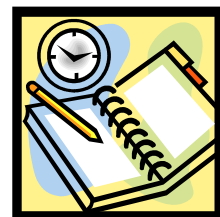
The FRONT parking lot is closed for morning drop-off and after-school pick-up. All students should be picked up from school no later than 3:30 unless the child is staying after school for a prearranged supervised activity. Students and parents will be given a warning the first time a student is not picked up within this 45- minute time frame. The second offense may result in the student not being able to attend the next extra curricular activity and/or social services being contacted to intervene.

## AGENDA/HANDBOOK

The agenda includes a log of the required hall passes for travel outside the classroom. *It is important that parents monitor the frequency of hall pass usage on a regular basis.* Because the agenda is a fundamental means of communication, the expectation for student care is the same as that of any textbook. Students are to utilize the agenda for its intended use and purposes. Students may purchase **agendas for \$5. The cost of replacing a lost agenda is \$10.**

**Means of Communication:** The agenda provides a structured format for home-school communication. On a daily basis, information in the agenda may include:

1. assignments
2. timeliness of completion of assignments
3. teacher comments, including but not limited to, notification of detention caused by incomplete assignments
4. parent comments as desired
5. parent signature indicating review of agenda is always appreciated





**What is the MIDDLE SCHOOL CONCEPT?**

Middle school students are uniquely different from elementary and high school students. They are not children anymore, yet they are not ready for the rigor expected in high school. These transitional years require a different organizational format, which is different from the Junior High format that many of us may have experienced.

In the Middle School Concept, a team of three or four teachers teach the traditional academics to their students. The students' classes are all in one smaller section of the building rather than scattered across campus. The team of teachers plans cooperatively, during their common planning time, in order to address individual student needs. This allows for parent conferences and professional learning. The close relationship and close proximity of a common group of teachers and students allows for flexibility and greater opportunity to meet the needs of students.

**Characteristics of Middle School Students**

- Early adolescents are in a particularly difficult stage of development.**
  - They begin to look at themselves, to seek their own identity and try new behaviors.
  - Peer approval and acceptance is a driving social need. They seek out friendships, groups, cliques, associations, clubs, and others their own age for the social interaction they cannot find from adults.
  - Research shows that many early adolescents experience a lack of self-confidence, low self-esteem, feel no control over their circumstances, and have a strong need for conformity.
- Many find it difficult to cope.**
  - They worry about their ability to learn and keep up.
  - They are torn between the desire for independence and the desire to please adults.
- Middle school students experience dramatic changes in physical development, which are wildly individualized.**
  - Height, weight, body chemistry, and rapid sexual maturation can be expected.
  - Fatigue is common, due to the sheer amount of energy used in their metabolism.
  - Most early adolescents thrive on competition, love sports, appreciate good sportsmanship, and practice hard at athletic skills.
- Most children in this age group operate on the concrete level of intellectual development.**
  - That is, they see only black/white issues, and not shades of gray, as adults are able to do.
  - This manifests itself in a strong sense of justice, especially when it is violated
  - Abstract concepts may be discussed, but are less often understood.
  - For most, math, especially Algebra, Geometry, and Trigonometry, is a difficult subject in middle school, as most concrete thinkers less easily understand the abstract concepts.
- Students at this age are sensitive**
  - They seem mature, but often lack the knowledge and experiences needed to understand the changes they are encountering.
  - Deflating comments or criticism can be devastating.
  - Sarcasm is taken at face value, due to concrete thinking
  - Conversely, these students can be heartless in their own comments.

**Mossy Creek Middle School strives to provide an environment where the child is understood; provide guiding experiences; and provide opportunities for success so as to negate emotions that result from naturally turbulent tendencies and experiences that occur during this period of profound growth and change and to stimulate each child to achieve his/her fullest potential intellectually, emotionally, socially, and physically.**

### **MCMS School Based Guidance Plan**

At MCMS, the guidance/counseling program is based on a developmental and preventative model. Our goal is to facilitate the total positive development of adolescence by helping them to develop a positive self-image and learn responsible life skills.

Mossy Creek's counseling programs are designed to help your child develop his/her educational, social, career, and personal strengths along with becoming a responsible and productive citizen. The focus of this program includes the needs, interest, and issues related to the various stages of student development.

Middle School students are in transition from childhood to adolescence. They experience accelerated social, intellectual, physical, and emotional changes. Since the changes that occur during this developmental period can be traumatic, our counselors are dedicated to providing a caring and supportive atmosphere. Various programs that are implemented at Feagin Mill in order to meet the "middle school challenge" include:

- **Classroom guidance**
- **Peer support groups**
- **Individual counseling**
- **Student support team (SST)**
- **Peer mediation/ Peer helpers**
- **Crisis intervention**
- **Special Education referrals**
- **Teacher/parent consultations**

Low grades are often related to poor study habits. The counselor is available to help you with this problem. However, your subject-area teachers are the first people you should see in order that they may offer advice as to what you can do in order to be successful.

#### **Helpful Hints from Mrs. Moss and Mrs. McCranie**

1. Develop an interest in what you are studying-don't refuse to learn!
2. Set up a time and a place to study that has adequate lighting and is free from distractions.
3. Budget your time into short periods of deep concentration.
4. Don't procrastinate; use your time wisely.
5. Understand your assignment completely; if needed, ask your teachers for help.
6. Keep your agenda organized and up-to-date.
7. Take notes in class and do your homework daily.
8. Treat your brain and body with care.

## **BRIDGE BILL - Georgia General Assembly HB 400: May 20, 2010**

The purpose of the BRIDGE Bill is to provide a process for development of an *individual graduation plan* for each student in Georgia. It allows students and parents to work together to plan for the future.

Beginning with the 2010-2011 school year, students in the sixth, seventh, and eighth grades shall be provided counseling, advisement, career awareness, career interest inventories, and information to assist them in evaluating their academic skills and career interests. Before the end of the second semester of the eighth grade, students shall develop an individual graduation plan in consultation with their parents, guardians, or individuals appointed by the parents or guardians to serve as their designee.

Please contact the school counselors @ 988-6171 Ext 40555 if you have any questions or concerns regarding your child's progress or development at Mossy Creek Middle School.

### **Issuing of Textbooks**

Students are responsible for the condition of books and their return. Textbooks are expensive. If the book or CD is lost, payment is required before the student is issued a new one. The book's age and condition determine the cost of the book.



It is important that the student notify the teacher whenever his/her textbook turns up missing. It may have been turned in to the office or put in the team's lost and found box. When textbooks are collected at the end of the school year, a fine may be required if the book is returned in poor condition. **All fines must be paid before report cards will be issued.** **Text on CD, including the jewel case, are regarded the same as a hardback textbook!**

### **Media Center and Services**

Open - Monday- Friday  
7:15 A.M. – 3:15 P.M.  
(Other hours by arrangement with media staff)

**Unless coming with an entire class, a student must have his/her agenda to come to the media center during the school day.**

#### Student Check-Out

General Collection books – 2 weeks  
Reference/Reserve books/Magazines – overnight

#### Overdue Fines

General Collection books – 10 cents/day  
Reference/Reserve books/Magazines – 25 cents/day  
(Additional books or magazines may not be checked out when fines are owed or books are overdue)

### **Report Card Hold Procedure**

Each 9 weeks, student report cards are held for media center issues on the following basis:

The student owes fines in excess of \$1.00 and/or  
The student has library book(s) at least 2 weeks overdue

Students receive overdue and fine notices on a regular basis from their language arts teachers. Also, as part of media center orientation at the beginning of the year, they are instructed on how to check their personal media accounts on Safari, our online card catalog. A list of students on the report card hold list is given to all homeroom teachers a week prior to the date report cards are sent home. This list is updated several times during the week preceding report cards. A final hold list is sent to teachers the day before report cards go home along with copies of a letter to be sent home in place of the held report card. This letter is to go in the report card envelope with all the other inserts. **Students will not be eligible to attend special activities, such as 8<sup>th</sup> Grade Day and/or Gator Days, if they owe fines or have overdue books.**

The Mossy Creek Middle School Media Center is a fully functional, fully accessible Media Center containing over 10,000 entries including books, videos, audio tapes, filmstrips, CD-ROMs, and other audiovisual materials. The Media Center is fully automated through the services of Surpass II. Patrons have access to CD-ROM - based electronic encyclopedias, the EBSCO magazine search program and the Internet. A wide selection of books supports the school wide Reading Counts program. An extensive professional library is available for the faculty and staff.

Our media center also has a multimedia production room. At the present time, it is equipped with IBM platform computers and printers, a scanner, digital camera, a video camera and a wide variety of CD-ROMs that provide students with the resources needed for project development. The Media center also has fully functional projectors with an automated screen. All students are encouraged to utilize the technology available in this lab. As funds become available, the multimedia will be expanded.

### **Internet Policy and Usage**

Mossy Creek Middle School recognizes the importance of having access to the Internet for our students. We follow the guidelines given us by the Houston County School Board. Students need to have a permission form signed by a parent on file. This form, once on file, ***doesn't need*** to be renewed each school year. If a parent wishes to change the status of use and not allow their child to use the Internet, they must notify the office.

We currently employ Cyber Patrol as our screening software and our teachers and staff members closely monitor the use. Even with these precautions, students may come upon an inappropriate web site. If the student comes upon an inappropriate web site, he or she is to notify the teacher/staff member of such site immediately.

**Deliberate inappropriate use of the Internet, and/or technology resources including hardware, will result in disciplinary action.**

“Do not go where the path may lead; go where there is no path and leave a trail.”  
Ralph Waldo Emerson

**Parent and Community Involvement**

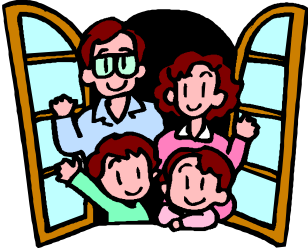
Mossy Creek Middle School teachers and staff always welcome parent involvement.

**Parental support is the key ingredient to our school's success.** You are a valuable resource for our classroom teachers and without your help and contributions, our jobs would be much more difficult and our goals unobtainable. The Board of Education has a policy in place to ensure a well-planned and effective volunteer program. **Parent and all other volunteers must complete a consent form authorizing a background check.** This means the Houston County Board of Education requests a clearance regarding any criminal and/or driver's history record information that may be in files of the criminal justice agency in Georgia. If you filled out a form within the past two years, at Feagin Mill or Perry Middle School, your name is still on our volunteer list. Your child's safety and welfare are our primary concern. We appreciate your cooperation and support as we work to build a strong and effective parent volunteer program. Ask for Mrs. Fulton if you have any questions regarding your Parent Volunteer clearance status.

Open **communication** with parents is a priority at Mossy Creek Middle School. There are communication tools that are utilized to ensure that this communication is consistent. For instance, each student is must maintain an **"Agenda."** The student writes several the objective, class work and homework for each class every day in this time-management organizer. In addition to teaching essential organization and management skills to students, the student agenda is accessible and will keep you informed of daily expectations and achievements. You are encouraged to communicate with the teachers using your student's "agenda". There is a replacement cost of \$10.00 in the event your child loses his/hers. **Each teacher will designated as a day parents should check and sign the agenda!**

Since it is imperative that the parents are well informed of their child's **academic progress**, you will receive an academic report, a **progress report** or **report card**, every four and one-half weeks. With the report cards, parents receive a team newsletter to update them regarding events of the previous nine-week grading period and informing them of upcoming events for the next grading period. Direct parental contact is viewed as a necessity to inform the parent of any changes in academics and/or behavior. If at any time you are concerned about your child's progress, please contact the school counselor and/or teacher.

Mossy Creek also has parent volunteer programs for the band and athletic programs' booster clubs. **The Band Booster Club** supports the Mossy Creek Band program by purchasing needed equipment through various fundraising activities. With their support, Mossy Creek will have one of the most respected band programs in Houston County.



*Home is the first school for us all, a school with no fixed curriculum, no quality control, no examinations, no teacher training." Charles Handy*

**Business Partners in Excellence**



Thank You! We are grateful for your support of Mossy Creek Middle School. We look forward to working hand in hand with you in shaping a wonderful school year for our students. Your involvement with our students will help build a successful future for our community.



We recognize **Kroger** and **Publix** stores for providing cash cards for our parents to earn income for our school. Parents may request these in the front office at Mossy Creek Middle School. We encourage all of our parents to utilize the cards whenever they buy their groceries.

**Students**

**Business Partners**

**C**

**C**

**Teachers**

**S**

**Parents**

*\* Please excuse the name of any business supporter inadvertently omitted from this page!*

## **Ten Things Teachers Wish Parents Could Do**

- Be involved in their child's education. Parents' involvement helps students learn, improves schools, and make teachers' jobs easier.
- Provide resources at home for reading and learning. Parents could have books and magazines for their children and read to or with their children each day
- Set a good example. Parents could show their children that they believe reading is both enjoyable and useful. They shouldn't spend all their time in front of the television.
- Encourage children to do their best in school. Parents must initiate that they believe education is important and that they want their children to do the best they possibly can in school.
- Emphasize academics. Too many parents get caught up in athletics and in preparing their children for the world of work, when academics should be their first concern.
- Support school rules and goals. This support aids both parents and educators in preparing children for the "real" world of work and social interaction! Parents should take care not to undermine school rules, discipline, or goals.
- Use pressure positively. Parents could encourage children to do their best, but they should not apply too much pressure, by setting unattainable goals or by involving them in too many activities.
- Call teachers early if there is a problem so there is still time to improve the situation. Don't wait for teachers to call.
- Accept their responsibility as parents, and not expect the school and teachers to take over this job. For example, parents should make it their responsibility to teach children basic discipline at home rather than leave this task to teachers.
- Parents should monitor their child's work. They should provide a quiet place for their child to study. They should spend time discussing how the school day was and checking that homework assignments were completed.

Source: 1-9 The National PTA Talks to Parents by Melitta J. Cutright, PHD., Doubleday, C19

### **THINGS EVERY PARENT NEEDS TO KNOW:**

When children say, "You aren't supposed to come to the school; this is middle school." Don't believe it! WE need you and they REALLY want you – they just can't admit it!

\*\*\*\*\*

Remind your child that he/she is held responsible for keeping up with books, equipment and materials issued – you don't want \$\$\$\$ surprises! They are EXPENSIVE!

\*\*\*\*\*

Major physiological and possible emotional changes during the middle school years are handled in wildly different ways. Be sure to call a counselor or a trusted teacher if you see your child having any difficulty or changes you don't understand.

\*\*\*\*\*

ALWAYS ask questions; Be sure you have all the information - Check it out for yourself when your child is staying after school. When in doubt, call us!

## Parent Conferences

Parent conferences are solicited and encouraged at MCMS. Academic teachers have common planning times that allow for you to be able to meet with these teachers together during the day. This saves parents scheduling time and allows you to determine if problems may be noted by more than one teacher, or to inform all teachers together of situations or circumstances. If you would like a conference, please contact the homeroom teacher or any of the team teachers to schedule.



## Phone Use

Instructional time is at a premium. Anytime students are away from class they miss valuable instruction. Please limit phone calls to your child to emergencies only. School materials and after-school plans should be organized ahead of time. Please discourage your child from calling you concerning everyday matters, i.e. p.e. clothes, homework, projects, going home with friends, and after-school pick-up.



## Publicity

We are proud of our students and their accomplishments. From time-to-time, photos will be taken and posted on the school website or published in the local paper. **If you object to having your child's photo used in this way, please contact the school office for an opt-out publicity form.**

## The Middle School Curriculum

Our curriculum, **Georgia Performance Standards (GPS)**, is designed to expand the basic skills developed in elementary school and to prepare students for rigorous courses in high school. Five hours of instructional time are offered in the academic areas of language arts, mathematics, social studies, and science. Fifty (50) minutes daily are allotted for each connection class and/or physical education. (See more about Georgia Performance Standards on page 16)

**LANGUAGE ARTS** instruction involves reading, writing, listening, and speaking. Students work on reading skills, the writing process, grammar, spelling, vocabulary development, and speaking and listening skills. The traditional expectations in reading are enhanced by the emphasis placed on writing instruction. We, therefore, have developed a curriculum where the two are taught as extensions of each other. Writing instruction is aimed at developing fluency, appropriateness, and effectiveness. Students learn the importance of accuracy in usage, punctuation, and spelling as they write for real-life purposes and real-life audiences. In the area of reading, we use a wide variety of print materials, including class sets of paperback novels, classroom libraries, and a literature series to help students enhance their reading and comprehension skills.

### **MATHEMATICS Grade 6**

By the end of grade six, students will understand the four arithmetic operations as they relate to positive rational numbers; convert between and compute with different forms of rational numbers; understand the concept of ratio and solve problems using proportional reasoning; understand and use line and rotational symmetry; determine the surface area and volume of solid figures; use variables to represent unknown quantities in formulae, algebraic expressions and equations; utilize data to make predictions; and determine the probability of a given event.

#### Grade 6 Concepts/Skills to Maintain

- Operations with decimal fractions
- Addition and subtraction of common fractions and mixed numbers with unlike denominators such as 2, 3, 4, 5, 6, 8, 10 and 12.
- Modeling multiplication of common fractions
- Modeling percent
- Graphing data
- Multiples and factors
- Perimeter, capacity and area of geometric figures
- Evaluating algebraic expressions

### **MATHEMATICS Grade 7**

By the end of grade seven, students will understand and use rational numbers, including signed numbers; solve linear equations in one variable; sketch and construct plane

figures; demonstrate understanding of transformations; use and apply properties of similarity; examine properties of geometric shapes in space; describe and sketch solid figures, including their cross-sections; represent and describe relationships between variables in tables, graphs, and formulas; analyze the characteristics of linear relationships; and represent and analyze data using graphical displays, measures of central tendency, and measures of variation.

Instruction and assessment should include the appropriate use of manipulatives and technology. Topics should be represented in multiple ways, such as concrete/pictorial, verbal/written, numeric/data-based, graphical, and symbolic. Concepts should be introduced and used, where appropriate, in the context of realistic phenomena

**Grade 7 Concepts/Skills to Maintain**

- Operations with positive rational numbers, including mixed numbers
- Line and rotational symmetry
- Surface area and volume
- Ratio as a representation of quantitative relationships

**MATHEMATICS Grade 8**

By the end of grade eight, students will understand various numerical representations, including square roots, exponents and scientific notation; use and apply geometric properties of plane figures, including congruence and the Pythagorean theorem; use symbolic algebra to represent situations and solve problems, especially those that involve linear relationships; solve linear equations, systems of linear equations and inequalities; use equations, tables and graphs to analyze and interpret linear functions; use and understand set theory and simple counting techniques; determine the theoretical probability of simple events; and make inferences from statistical data, particularly data that can be modeled by linear functions.

Instruction and assessment should include the appropriate use of manipulatives and technology. Topics should be represented in multiple ways, such as concrete/pictorial, verbal/written, numeric/data-based, graphical, and symbolic. Concepts should be introduced and used, where appropriate, in the context of realistic phenomena. **Concepts/Skills to Maintain** Operations with rational numbers Properties of equalities Direct & inverse proportions Solving multi-step equations Properties of real numbers Statistics

**Grade 8 Concepts/Skills to Maintain**

- Operations with rational numbers
- Properties of equalities
- Direct & inverse proportions
- Solving multi-step equations
- Properties of real numbers
- Statistics

## SCIENCE

The middle school **science** program is designed to give students the scientific background they need for the more specific high school science courses. The approach incorporates, to the greatest extent possible, “hands-on” experience. Students are involved in projects using the scientific method: forming hypotheses, specifying procedures for proving or disproving the hypotheses, and formulating conclusions. At the sixth grade level, students are instructed in earth science. Seventh graders are instructed in life science, and eighth graders are instructed in physical science. We believe that all students must learn the basics of science and the scientific method in order to understand the complex and ever-changing world in which we live.

## SOCIAL STUDIES

**Social studies** in the middle school is based on cultural area studies, which include the geographic patterns, climate, and natural resources of the cultural regions. Studies also include ethnic groups and linguistic patterns of those regions, as well as the historical, political, economic, social, cultural and religious development of the regions. Students are given opportunities to demonstrate social studies skills, including the use of maps and globes, information processing, problem-solving, social participation, and time and chronology skills.

The cultural areas studied in the sixth grade include Latin America, North America, and Europe; in the seventh grade, studies include Asia, Africa and Australia/Oceania. In the eighth grade, the curriculum is based on Georgia studies, learning about the history and government of the state in which they live. Current events in the United States and throughout the world are also taught at all grade levels.

## CONNECTION CLASSES

Connection classes include art, band, computers, Family and Consumer Science (FCS), foreign languages (Spanish), physical education and reading/drama. Students enroll in connection classes for a nine-week period. In these classes, students explore foreign languages, vocational education, fine arts, and personal learning skills – some areas they may chose to pursue in high school. Students shall complete at least two courses in each of the three different connection areas during their middle school career. In general, students complete art, computers, FCS, and foreign language throughout the year, combined with PE each nine-weeks.

The **HEALTH** program at the middle school level includes AIDS and sex education objectives. This instruction is a cooperative effort between science and health/physical education teachers. This program also includes instruction in health and safety. The **PHYSICAL EDUCATION** program stresses the importance of physical activity throughout life. It helps students develop the ability to set personal fitness goals, develop a fitness program, implement this program and evaluate the results. The program also helps students understand the basics of cooperation, competition, and leadership by providing a variety of opportunities for participation in individual, dual and team sports. Students are required to dress out for physical education in shorts or sweat pants, a shirt, and tennis shoes in order to actively participate in PE.

### **What IS a performance standard, and why does it represent an improvement upon the old content standards used in the previous curriculum?**

Performance standards go into much greater depth than the content standards used in the previous curriculum. The performance standard incorporates the content standard, which simply tells the teacher what a student is expected to know (i.e., what concepts he or she is expected to master), and expands upon it by providing three additional items: suggested tasks, sample student work, and teacher commentary on that work.

Performance standards provide clear expectations for assessment, instruction, and student work. They define the level of work that demonstrates achievement of the standards, enabling a teacher to know “how good is good enough.” The performance standards isolate and identify the skills needed to use the knowledge and skills to problem-solve, reason, communicate, and make connections with other information. Performance standards also tell the teacher how to assess the extent to which the student knows the material or can manipulate and apply the information.

Reference: <http://www.georgiastandards.org/faqs.aspx#q4>



Georgia Performance Standards for each content area can be accessed through the Georgia Department of Education website. <http://www.georgiastandards.org/>

## **Character Education**

The word “character” is derived from the Greek word “to mark” or “to engrave,” and is associated with the writings of philosophers such as Plato and Aristotle. People with good character habitually display good behavior, and such habits are embedded, or marked, on a person. While there may be no specific consensus on a list of desirable character traits, there is considerable agreement on desirable values that underlie these traits.

Throughout history philosophers and educators have been concerned about the cultivation of character traits and virtues such as honesty, courage, perseverance, loyalty, caring civic virtue, justice, respect and responsibility, and trustworthiness. The consensus is that these traits and others like them are not innate and thus must be acquired through teaching and practice in the home and in the schools. Traits or virtues must be transmitted to be internalized. Children learning these lessons, however, should not behave solely based on a set of principles or rules, but rather they must learn to behave with understanding. It is an important function for educators, therefore, to help form children into adults who behave well, who demonstrate good “external conduct,” and who understand why that sort of behavior is important.

Mossy Creek Middle School has an obligation to both its students and parents to teach and instill these important character traits. These virtues will be presented to students, as well as modeled and practiced by our staff. Each week the students will participate in Character Education during Advisement. Students’ internalization of positive values and demonstration of desirable character traits is our goal.

## Grading

Each teacher sets his/her grading procedures and expectations for student achievement at the beginning of the course. At the midpoint of each grading period, a progress report is prepared and given to students stating the general status of the child's progress; therefore, you should expect notification every 4 ½ weeks as a minimum. Mossy Creek Middle School expects all class and homework assignments to be completed in a timely manner. Any missing assignments will result in a signature on the student's *Gator Card* (see MCMS discipline procedures) and must be completed and submitted to the appropriate teacher.

**According to the Houston County Board of Education promotion and attendance policy, all students must pass five out of six classes including all academic subjects in order to be promoted to the next grade, and must be in attendance for 95% of the school term.**

## FINAL EXAMS

- Sixth-grade students will take a comprehensive nine-week test beginning second semester which will count as a regular test grade.
- Seventh-grade students will take a comprehensive nine-week test beginning first semester which will count 10% of their nine-week grade.
- Eighth-grade students will take a comprehensive nine-week test beginning first semester which will count 20% of their nine-week grade.

## SMARTWEB

In addition to receiving printed progress reports and report cards, parents can access their student's grades at any time via the Internet. You will be required to go through the parent registration in order to view information by going to the Houston County Board of Education website, [www.hcbe.net](http://www.hcbe.net).

Call the school for your SmartWeb I.D. number. Enter the site [www.hcbe.net](http://www.hcbe.net), select SmartWeb. You will then be prompted to enter the Student ID which was given to you by the school and a password.

## HOMEWORK-Yes, we believe in homework at MCMS!

**Expect 60-80 minutes of homework each night.**

- **Help your child with their homework by providing:**
  - ✓ a comfortable, quiet place to work
  - ✓ checking of their *Agenda* for assignments
  - ✓ an established routine time to complete assignments.
- **Always check with teachers if you see too much or too little homework. Help us to assure that ALL homework assignments are completed.**

**JUST A NOTE**  
Reading is homework!  
It is just as important  
as any other homework  
assignment.



We routinely hear as many concerns voiced over **too much** homework as we do with **not enough** homework. **Research shows that parent expectations and supervision of regular homework assists children's school success.**

## Scholastic Reading Counts

Reading is integral part of the learning process. While all teachers integrate reading instruction into all academic content areas, the language arts teacher addresses general reading strategies. One strategy includes the **Scholastic reading Counts** Program, a program that motivates students to increase their reading skills by reading quality books outside of normal class studies. The media center has an increasingly large number of books used in the program for students to check out. Students earn points on the reading level and mastery of the novel by taking a computerized test over the contents of the novel. Students will be rewarded for their effort through our unique incentive plan. The **SRI, Scholastic reading Inventory** program, which tests reading comprehension level, is used in conjunction with SRC. If students conscientiously utilize these programs, they will be able to track their progress and reap the intrinsic rewards of their commitment, increased comprehension, which leads to improved academic achievement and higher test scores.

|   |   |
|---|---|
| <b>Inappropriate use of a computer</b><br><b>Or</b>   | First Offense – loss of all SRC points and three days of ISS<br>Second Offense – five days of ISS; suspension participation in the AR program |
| <b>Cheating on the SRC program</b><br>**Offense/Disposition taken from Guidelines of Discipline on page 23. |   |

## CONDUCT GRADES

Each student at Mossy Creek will earn a conduct grade that will be recorded on their progress report and report card during the school year. Each student will receive a Team Conduct grade from his/her academic and connections teachers. We expect Mossy Creek students to have good conduct from the time they leave home to the time they arrive home each afternoon. Below is a rubric that will be used to assign your student a conduct grade. All students who receive a Satisfactory (S) and or Excellent (E) conduct grade will be allowed to attend all Mossy Creek activities such as: Pep rallies, assemblies, dances and clubs. Students who receive a Needs Improvement (N) conduct grade will not be allowed to attend these activities. Students not allowed to attend school hour activities will be given other assignments in the classroom or cafeteria. Student conduct grades will be checked at each progress report and report card distribution. *See also CONDUCT RUBRIC, Student Handbook, p. 20*

## MCMS STUDENT RECOGNITION

At Mossy Creek, we believe it is very important to celebrate the success of our students. In order to do so, we have implemented various recognition programs to be held throughout the year. Teachers, administrators, and outside agencies select award recipients. It is our intent to recognize every deserving student. We encourage parents to attend award programs to share in the recognition of student accomplishments.





# Extra-Curricular Activities

## Extra - Curricular Activities

### Athletics

Interscholastic athletics really are extra to the Middle School Concept of allowing all students to participate. However, we believe that much can be learned from interscholastic competition. Boys may participate in football, basketball, track, baseball, and soccer. Girls may participate in softball, basketball, track, and soccer. The selection of players is made by our coaching staff. Girls may also participate in cheerleading. As in any competitive activity, all students cannot make the team or squad. That is also one of the lessons we try to teach to our students-- how to deal with adversity and disappointment.

Students are required to meet eligibility standards to participate in these activities and have a current physical on file. **Students must have failed no more than one subject the previous semester.** These requirements must be met in order to even try out. Sixth graders are not eligible to participate in any of these activities, as their primary responsibility is to make a successful transition into middle school during their first year. **The second semester of the year determines eligibility for the first semester of the following year. Summer school counts as part of the spring semester, and has impact on eligibility for the next fall's activities.**

### Clubs

A wealth of activities is available to our students at Mossy Creek Middle School. School dances are included with co-curricular activities, because they help students to develop socially. *RESEARCH indicates clubs and activities provide a safe place where students are known and belong, catalyzing stronger engagement and connection in school.*

**Clubs and activities and their requirements are listed below.** Other clubs may be added during the year. The sponsoring group charges an admission fee as a fund raising activity. Please be aware of the requirements before participating in ANY activity. Early in the fall, teachers will post and announce opportunities to join these activities.

**Discipline, dress code and other behavior policies of the school and district are in effect at all school sponsored activities and functions.**

| Club                 | Sponsors  | Mission   | Activities   | Dues | Membership Requirements   |
|----------------------|-----------|---|--|------|---|
| <b>Book Club</b>     | Mrs. Roth | To foster a love of reading through discussion of current adolescent literature   | This club meets bi-weekly before homeroom for breakfast and discussion of student-selected novels. All students and teachers are invited to participate. |      | Must maintain conduct grade of E or S                                       |
| <b>Pep Club</b>      |           | To provide support for our athletes and foster school spirit.   | Make game signs, cheer at athletic events, sell spirit ribbons, etc.   | \$5  | Must maintain conduct grade of E or S and remain in good academic standing. |
| <b>Academic Team</b> | Ms. Kohn  | To provide team members with the opportunity to increase and share their knowledge while representing Mossy Creek Middle in the PAGE Academic Bowl. | Students will meet and practice three days a week in the mornings from 7:00-7:25 AM.   |      | The members of this team will audition in September.                        |

|   |   |  |  |                             |  |
|---|---|--|--|-----------------------------|--|
| <b>Fellowship of Christian Athletes</b> | Mrs. Waller<br>Coach Brett<br>Mrs. Veline | To provide the opportunity for athletes to meet for prayer and a devotional.   | This club meets for prayer, devotion, and discussion of challenges facing today's athletes.  | \$25.00<br>(includes shirt) | Must maintain conduct grade of E or S  |
| <b>Prayer Club</b>                      | Mrs. Tammy Strickland                     | To provide the opportunity for students to meet for prayer and a devotional before the school day  | This club meets every Wednesday morning before school. Activities include guest speakers as well as sponsoring "See You at the Pole" and "Operation Christmas Child."  |                             | Must maintain conduct grade of E or S  |
| <b>Student Council</b>                  | Social Studies Teachers                   | The student council serves to advise the administration of ideas for school improvement and provide service and support to the school and staff.                                 | Student council meets monthly, sponsors the valentines dance and provided service projects to support teacher of the month and other school projects.  |                             | Student representatives are elected by their peers and Must maintain conduct grade of E or S and remain in good academic standing.                           |
| <b>Art Club</b>                         | Mrs. McNeil                               | Students will meet to discuss art and create wonderful works of art for enjoyment.   | Meet after-school to explore different aspect of the visual arts.  | \$5                         | Must maintain conduct grade of E or S and remain in good academic standing.  |
| <b>Science Club</b>                     | Ms. Kohn                                  | To provide the opportunity for students to explore science concepts through hands-on investigations  | This is a club for 7 <sup>th</sup> and 8 <sup>th</sup> graders who have their teacher's recommendation and who maintain an 87 or higher average in math and science classes. Activities include inquiry labs of student interest, field trips, and guest speakers. | \$5                         | Must maintain conduct grade of E or S and remain in good academic standing.  |
| <b>Math Counts</b>                      | Mrs. Strickland<br>Mrs. Rainey            | MATHCOUNTS® is a national math enrichment, coaching & competition program that promotes middle school mathematics achievement.   | Students will compete individually or as part of a team in a written & oral competition held at Macon State College in February. Top students at the competition will advance to the state, & ultimately, national level.  |                             | Excel in mathematics and posses a willingness to practice various types and difficulty levels of middle school math problems. All grade levels are eligible. |
| <b>Broadcast Club</b>                   | Mrs. Smith<br>Mr. Cooper                  | Broadcast Club develops individual and group cooperation; enhances research and writing skills, develops public speaking skills, technology skills and cultivates school spirit. | Members will learn and practice the process of producing a news broadcast.   | \$25.00<br>(includes shirt) | Must maintain conduct grade of E or S  |

|  |                 |   |  |      |  |
|--|-----------------|---|--|------|--|
| <b>Future Educators of America (FEA)</b> | Mrs. Rainwater  | The FEA provides students with opportunities to explore teaching as a career option. FEA encourages students to be a positive role model in the school, the community, and fosters leadership skills. | Students work with elementary and primary school children and participate in community service projects.   | \$10 | Must maintain conduct grade of E or S and an overall academic average of 80.   |
| <b>Yearbook Staff</b>                    | Mrs. Parrish    | To publish the school yearbook.   | Students will work with sponsors to create, edit, and publish the school yearbook.   |      | Must maintain conduct grade of E or S and remain in good academic standing.  |
| <b>National Honor Society</b>            | Mrs. Singletary | To create enthusiasm for scholarship, to stimulate a desire to render service, to promote leadership, to develop character, and to encourage good citizenship” in our middle school students.         | Students meet quarterly or as needed to meet the mission of our chapter.   | \$10 | Membership is bestowed by a faculty council based on outstanding scholarship, leadership, service, character, and citizenship. |
| <b>Creek Crafters</b>                    | Mrs. Trayler    | To use creativity to enhance the school atmosphere  | Students will decorate halls, assist teachers by decorating for dances and other school activities. Creek Crafters will strive to provide a positive spirited environment. | \$15 | Must maintain conduct grade of E or S  |

### Attendance at MCMS

*Research shows that there is a direct correlation between student achievement and school attendance.* It is, therefore, most important that students be in school unless there are legitimate reasons why they must be absent. Georgia law allows for student absences to be excused only for the following reasons:

1. **Personal illness**
2. **Illness in immediate family**
3. **Death in family**
4. **Recognized religious holidays**
5. **Absences mandated by other government agencies, such as a court order**
6. **Serving as a legislative page (students are actually counted present for this)**
7. **Family leave for military deployment (must complete appropriate application)**

No other absence from class will be considered excused. Students will be counted absent even if the absence is excused, except in case of #6. Students on field trips or officially sanctioned instructional trips organized by the school will also be counted present. A student who is absent from school for any portion of a school day must have a written excuse for the absence from the parent or guardian. School officials will then determine if the absence is excusable, using the reasons listed above as guidelines. **If a student is absent and does not bring a written excuse within three days of his return to school, the absence will be considered unexcused.**

Parents can apply for an unexcused, but prearranged absence in instances where it is absolutely necessary for the family to be out of town. *This must be done prior to the absence by sending a letter to the Principal explaining the reason for the child's impending absence.* In so doing, a student will be allowed to make up work missed.

### Early Dismissal/Tardies

Any student who leaves school early or reports to school late **must** come to the office either accompanied by a parent or guardian, or with a note from a parent or guardian. Students who are tardy to school will present an excuse for their tardiness and receive an admittance slip for class. Students with excessive tardies to school will be referred to the counselors and their parents will be notified. Please notes that excessive unexcused tardies and/or early dismissals may result in disciplinary action. Tardies and early dismissals are excused for the following reasons only: personal illness, illness in immediate family, death in the family, religious holiday, or a court order.

In order for students to be counted present, students must be present for half of his/her classes. Students will only be dismissed to custodial parents unless the parents has designated otherwise. Emergency release forms, to expedite this process, are available in the office upon your request.

### **Procedure for Early Dismissal:**

1. **Student presents note stating reason for dismissal signed by parents to office BEFORE homeroom.**

2. Student sign-out, stating destination and receives early dismissal slip indicating dismissal time.
3. Student shows early dismissal slip to the teacher at departure time and waits in office/front lobby.
4. If student returns, he/she signs-in and receives admittance slip.

**Houston County Attendance Policy**  
**In order to be promoted to the next grade a student must be present 95% of the school year.**  
 Students who miss more than **18 days** during the year will be retained.

**BOOKBAGS**

Book bags must remain in student lockers throughout the day. Rolling book bags are allowed, however, they will be stored under the lockers. The school will not be responsible for lost or damaged items.

**BREAKFAST/LUNCH PROGRAM**

Student lunch is provided at a cost of \$2.25 per day. **Students are not allowed more than one charge.** The School Nutrition Program accepts cash, checks, or can be paid online at [www.mylunchmoney.com](http://www.mylunchmoney.com). Students will **not** be permitted to have fast food or hot lunches delivered to school, except when parent(s) come to dine with their child. **Parents eating with their child are requested to sit in a designated area.**

|              |                   | BREAKFAST      |                 | LUNCH          |                 |
|--------------|-------------------|----------------|-----------------|----------------|-----------------|
| MONTH        |                   | REDUCED        | FULL PAY        | REDUCED        | FULL PAY        |
| August       | (23 days)         | \$6.90         | \$34.50         | \$9.20         | \$51.75         |
| September    | (21 days)         | \$6.30         | \$31.50         | \$8.40         | \$47.25         |
| October      | (15 days)         | \$4.50         | \$22.50         | \$6.00         | \$33.75         |
| November     | (16 days)         | \$4.80         | \$24.00         | \$6.40         | \$36.00         |
| December     | (12 days)         | \$3.60         | \$18.00         | \$4.80         | \$27.00         |
| January      | (20 days)         | \$6.00         | \$30.00         | \$8.00         | \$45.00         |
| February     | (16 days)         | \$4.80         | \$24.00         | \$6.40         | \$36.00         |
| March        | (22 days)         | \$6.60         | \$33.00         | \$8.80         | \$49.50         |
| April        | (16 days)         | \$4.80         | \$24.00         | \$6.40         | \$36.00         |
| May          | (19 days)         | \$5.70         | \$28.50         | \$7.60         | \$42.75         |
| <b>TOTAL</b> | <b>(180 days)</b> | <b>\$54.00</b> | <b>\$270.00</b> | <b>\$72.00</b> | <b>\$405.00</b> |

| 2011-2012 Nutrition |         |         |        |
|---------------------|---------|---------|--------|
| NEW PRICES          | REDUCED | STUDENT | ADULT  |
| BREAKFAST           | \$.30   | \$1.50  | \$1.75 |
| LUNCH               | \$.40   | \$2.25  | \$3.00 |

## **DANCES**

All school rules and dress code policies are strictly enforced at school dances. **ONLY STUDENTS CURRENTLY ENROLLED AT MOSSY CREEK ARE ALLOWED TO ATTEND SCHOOL DANCES.**

## **DELIVERIES**

Flowers, balloons, cupcakes, etc. will **not** be delivered to students.

## **ELECTIONS AND OFFICES**

### **Qualifications of Candidates/Elected Officers**

1. Students must pass all subjects previous semester.
2. Students must have admirable behavior and a positive attitude.
3. If, during the school year, an elected student fails to meet the above academic criteria or is involved in any disciplinary misconduct resulting in suspension, the student may be removed from the office.

## **LOST AND FOUND**

Teachers will provide a space in their rooms for unclaimed items. Students should be diligent in retrieving and attempting to find lost items. Items left unclaimed for a period longer than one week may be donated to local charities. Below are some helpful hints to avoid loss of personal items.

1. Do not bring any valuables or large amounts of money to school.
2. Mark all your possessions with your name.
3. Never share your locker combination with friends. Do not “rig” your locker so that it can be opened by other students. This and any other abuse of lockers may result in the student losing the privilege of having a locker.
4. Never carry items of value to the P.E. dressing rooms; these lockers remain unlocked and are **not** secure.

## **MEDICATION**

**ALL over-the-counter** medications (including Tylenol) **MUST** be brought to the office in an unopened bottle with the appropriate medical form. These forms must be completed by the parent and are available in the office. Please check expiration date on bottle before bringing the medication to school. All medications will be administered in the office. **All prescription medication** taken on a daily basis must be accompanied by a physician’s statement form, which may be obtained from the office.

## OFFICE SERVICES

Students may visit the office to use the phone for an emergency; the phone is not to be used to call for forgotten assignments or items. Students may also visit the office to see the medical technician, counselor or administrator.

## MCMS DISCIPLINE POLICY

It is Mossy Creek's belief that a structured and disciplined environment helps students develop self-control, character, orderliness, and efficiency, and that good discipline is inherently a cornerstone of a quality educational program. The Mossy Creek discipline policy provides for close communication with parents at the onset of discipline problems so that together we can help students have a positive experience and successful school year. While the school will help students develop good decision-making skills, ultimately, the students must make choices for themselves and be responsible for their own behavior and actions. Proper student conduct in school and at school-related activities is a joint responsibility of students, parents, and staff. Together we can make Mossy Creek an effective place for learning and also help our students develop the habit of self-restraint, which will help develop individual character.

Our first priority shall always be given to the safety of our students and to the attainment of quality education, free from disruption, for all students who seek it and accept the responsibility therein. You have our commitment that the administrative staff and teachers will administer discipline in a fair and consistent manner.

## GUIDELINES OF DISCIPLINE

School discipline applies to incidents that occur on the way to school, at school, and returning home from school. Whenever a student is referred to the office, he or she will be afforded *due process* and allowed an opportunity to tell his/her side of the incident. If necessary, written statements will be taken. The student will be informed of the school rule(s)/policy(ies) that was violated and the consequences. **All referrals will result in a phone call home and/or written notification.**

## OFFENSES(S) AND DISPOSITION(S)

The following is a chart which describes offense(s) and disposition(s) in order for students and parents to have a better understanding of discipline policies and procedures. The dispositions of the following offenses are guidelines only which provide suggestions for how teachers and the administration of the school may address inappropriate student behaviors. **Mossy Creek follows a progressive discipline plan that increases punishment for continuous misbehavior. *The school's administrators retain the right to modify dispositions as they determine necessary.***

### Example of Progressive Discipline

- 6 Signatures – 3 Days Lunch Detention
- 9 Signatures – 5 Days Lunch Detention
- 12 Signatures – 2hr. after school detention or 3 days ISS
- 15 Signatures – 3 Days ISS
- 18 Signatures – 5 Days ISS

## MCMS DISCIPLINE CHART

| Level I   | 1 <sup>st</sup> office referral   | 2 <sup>nd</sup> office referral   | 3 <sup>rd</sup> office referral                            | 4 <sup>th</sup> office referral                            |
|---|---|---|--|--|
| <u>Examples</u> <ul style="list-style-type: none"> <li>• Gum</li> <li>• Failure to turn in homework</li> <li>• Dress code</li> <li>• Unauthorized location</li> <li>• Failure to follow standard procedures</li> <li>• Unprepared for class</li> <li>• Horseplay</li> </ul> | 3 days lunch detention  | 5 days lunch detention  | 3 days ISS   | 5 days ISS   |
| <ul style="list-style-type: none"> <li>• Class disruption</li> </ul>  | ISS the rest of the day;<br>3 or 5 days of lunch detention depending on severity  | ISS the rest of the day;<br>5 days lunch detention or 3 days of ISS depending on severity | 3 days ISS or 5 days ISS depending on severity             | 5 days ISS or 3 days home suspension depending on severity |
| LEVEL II  | 1 <sup>st</sup> office referral   | 2 <sup>nd</sup> office referral   | 3 <sup>rd</sup> office referral                            | 4 <sup>th</sup> office referral                            |
| <u>Examples</u> <ul style="list-style-type: none"> <li>• Substantial disruption of class</li> <li>• Skipping class (on campus)</li> <li>• Profanity</li> <li>• Inappropriate displays of public affection</li> </ul>  | ISS the rest of the day;<br>5 days lunch detention or 3 days of ISS depending on severity   | 3 days ISS or 5 days ISS depending on severity  | 5 days ISS or 3 days home suspension depending on severity | 5 days home suspension possible long term suspension       |
| <ul style="list-style-type: none"> <li>• Malicious teasing</li> </ul>   | 5 days lunch detention  | 3 days ISS  | 5 days ISS   | Home suspension  |
| <ul style="list-style-type: none"> <li>• Possession of electronic devices</li> </ul> <p><i>* disruption of class caused by electronic device will result in assignment to ISS</i></p>   | Device is taken up and released to parent or<br><b>3 days ISS</b> if the phone is on or being used (texting, calling, camera use) | 5 days ISS  | 5 days ISS   | 3 days home  |
| <ul style="list-style-type: none"> <li>• Academic dishonesty</li> </ul>   | No credit given   | No credit given + 3 days ISS  | No credit given + 5 days ISS                               | No credit given + home suspension                          |

| <b>LEVEL III</b>  | <b>1<sup>st</sup> office referral</b>                                     | <b>2<sup>nd</sup> office referral</b>  | <b>3<sup>rd</sup> office referral</b>               | <b>4<sup>th</sup> office referral</b>      |
|---|---|--|---|--|
| <u>Examples</u> <ul style="list-style-type: none"> <li>• Disrespect</li> <li>• Aggressive behavior</li> <li>• Defiance</li> <li>• Computer Misuse</li> </ul>  | 3 days ISS  | 5 days ISS   | 10 days ISS/<br>3 days home                         | 3/5 days home<br>Administrative discretion |
| <ul style="list-style-type: none"> <li>• Forgery</li> <li>• Skipping (off campus)</li> <li>• Possession of fireworks</li> <li>• Possession/use of tobacco</li> </ul>  | 3 days ISS  | 5 days ISS   | Recommendation for expulsion                        |  |
| <ul style="list-style-type: none"> <li>• Defacing school property</li> </ul>  | 3 days ISS/Notify law enforcement   | 5 days ISS/Notify law enforcement  | Recommendation for expulsion/Notify law enforcement |  |
| <ul style="list-style-type: none"> <li>• Bullying/Harassment</li> <li>• Sexual Harassment</li> </ul>  | 5 days ISS-<br>Recommendation for expulsion<br><i>(based on severity)</i> | Home suspension/<br>Recommendation for expulsion<br><i>(based on severity)</i> | Immediate suspension, recommendation for expulsion  |  |
| <ul style="list-style-type: none"> <li>• Fighting</li> <li>• Theft</li> <li>• Gang related activity</li> </ul>  | 5 days ISS/<br>Law enforcement notified                                   | 10 days ISS/<br>Law enforcement notified                                       | 3 days home suspension/<br>Law enforcement notified | Recommendation for expulsion               |
| <ul style="list-style-type: none"> <li>• Student use of teacher workstation</li> <li>• Chronic discipline problems</li> </ul>   | Recommendation for expulsion  |  |   |  |
| <ul style="list-style-type: none"> <li>• Possession and/or distribution of drugs</li> <li>• Possession and/or distribution of look- alike drugs and or prescription or over-the-counter drugs</li> <li>• Weapon or dangerous instrument</li> <li>• Assault on staff or student</li> <li>• Terroristic threats and acts</li> <li>• Pulling the fire alarm, falsely calling 911, bomb threat</li> </ul> | Recommendation for expulsion<br><br>Law enforcement notified              |  |   |  |

**School administrators and/or designated representatives possess the authority to conduct a reasonable search of lockers, students, and their possessions while either on campus or at a school sponsored activity. Drug dogs are brought in periodically to conduct random searches.**

**\*Parents, please be advised and encouraged to communicate to your children the consequences and potential criminal penalties of underage sexual conduct and related crimes for which children may be tried as adults.**

### **ALTERNATIVE SCHOOL/STUDENT REVIEW COMMITTEE**

Students who are referred to the alternative school for long term suspension have the right to a Student Review Committee (SRC) hearing. Parents have the right to a **Tribunal** hearing before the School Board if they do not agree with the recommendation of the SRC. Any student entering Mossy Creek Middle School from the alternative school may be placed on a behavior contract.

### **BUS POLICIES AND BEHAVIOR PROCEDURES**

**Riding a school bus is a privilege – it is not a required service. Bus suspension is a reasonable and often necessary discipline action. Bus privileges can be suspended either temporarily or permanently.**

We believe all students can behave appropriately and safely while riding on a school bus. Student behavior that may impair the ability of the bus driver to carry out his/her duties while driving the bus will not be tolerated. In order to insure the safety of our students, the following rules must be observed on the bus:

- Respect yourself and the rights of others.
- Follow the driver's directions the first time they are given.
- Stay in your seat; keep all parts of your body and all objects in the bus.
- Pushing, shoving, or fighting is not allowed.
- Eating, drinking, chewing gum, smoking, or spitting is not allowed.

If a student exhibits disruptive behavior, the driver will notify the parents immediately in an attempt to solve the problem; however, if the student continues to violate bus rules the following will occur:

|                                    |   |
|------------------------------------|---|
| 1 <sup>st</sup> reported incident: | Parent contact and possible assignment to lunch detention or ISS. |
| 2 <sup>nd</sup> reported incident: | Three days off bus and/or lunch detention or ISS                  |
| 3 <sup>rd</sup> reported incident: | Five days off bus.  |
| 4 <sup>th</sup> reported incident: | Ten days off bus  |
| 5 <sup>th</sup> reported incident: | Suspension off the bus for the remainder of the year              |

A student may be suspended from the bus for 1-10 days on the first report if the principal determines the incident warrants suspension. For the following offenses (but not limited to) even though there may be no other bus reports, consequences begin at the third report level:

1. **Disrespect of driver, monitor, or administrator\***
2. **Fighting\***
3. **Vandalism\***
4. **Possession of tobacco\***

In other behavior such as possession of weapons or drug or severe disrespect of the driver, the student will be suspended from the bus for the remainder of the year.

\* Behavior will also receive the appropriate disposition of time in ISS.

### **BEHAVIOR BEFORE AND AFTERSCHOOL**

1. Go directly to the cafeteria (6<sup>th</sup> grade) or the Gym (7<sup>th</sup> and 8<sup>th</sup> grades) upon arriving at school.
2. Students will be dismissed at 7:15 A.M. and should report directly to homeroom.
3. If you arrive after gym/lunchroom dismissal, report directly to homeroom.
4. You must have a written pass to be in hallways before 7:15 A.M.
5. Once you arrive on campus, you may not leave without parental permission and signing out through the office.
6. The library is open for study each morning and after school. You will need a pass from your homeroom teacher to visit the library before school.
7. Bicycle riders should not linger at the bike rack.
8. No loitering on street corners adjacent to campus before and after school is allowed.
9. Chewing gum is **not** allowed at school. Drinks are **not allowed in classrooms or hallways**.
10. The gymnasium is off limits before and after school except for students who are participating in a supervised activity.
11. Car riders should wait **outside the gym lobby**.

### **CONDUCT GRADES**

Each student at Mossy Creek will earn a conduct grade that will be recorded on their progress report and report card during the school year. We expect Mossy Creek students to have good conduct from the time they leave home to the time they arrive home each afternoon. Below is a rubric that will be used to assign your student a conduct grade. All students who receive a Satisfactory (S) and or Excellent (E) conduct grade will be allowed to attend all Mossy Creek activities such as: pep rallies, assemblies, dances, and club activities. Students who receive a **Needs Improvement (N) or Unsatisfactory (U)** conduct grade **will not** be allowed to attend these activities. Students not allowed to attend school-hour activities will be given other assignments in the classroom or cafeteria. Student conduct grades will be checked at each progress report and report card distribution.

## Mossy Creek Middle School Conduct Rubric

**Student Name:** \_\_\_\_\_

|          | <b>1. Team work/<br/>relationships</b>  | <b>2. Responsibility</b>  | <b>3. Attitude</b>   | <b>4. Focus</b>   | <b>5. Behavior</b>  |
|----------|---|---|--|---|---|
| <b>E</b> | Works very well with all group members. Completes share of group responsibilities. Has positive relationship with every member of the group. Extends self to make friends with all students. Treats teacher and staff with respect. | Turns in all work on time. Has all books and agenda available in class when needed. Keeps up with their belongings and keeps locker neat and orderly. Needs no help staying organized.  | Shows enthusiasm and a positive attitude all the time. Encourages others. Appreciates different ideas and experiences.   | Focuses on task at hand and makes good use of time to complete assignments. Shows interest in new learning and asks questions and engages in discussion.          | Is a model student, always using best manners and polite language. Has fun with all students and helps others to do the same. Makes good, safe choices and models good behavior for others. |
| <b>S</b> | Works well with group, does fair share of the assigned tasks, and gets along well with most students. Is considerate to the teachers and staff.   | Turns in most of their work on time. Has all books and agenda available in class most of the time. Keeps up with their belongings and keeps locker neat and orderly most of the time. Needs only slight reminder to stay organized. | Has a positive attitude most of the time, and tries new things when comfortable with them. Puts on "best face", even under difficult or strenuous circumstances. | Most of the time is on task and is able to get right to work without being reminded. Makes good use of time.  | Is well-behaved. There were a few reprimands, but not more than once for the same thing.  |
| <b>N</b> | Has problems working with group and does not resolve them in positive ways. Does not complete share of work. Gets along with some of the people in the class, and some of the teachers.   | Has difficulty turning in work on time. Has difficulty bringing books and agenda to class. Has difficulty keeping up with his/her belongings and keeping locker neat and orderly. Has to be reminded often to stay organized.       | Tries to be positive, but often makes more negative comments and causes others to be negative.   | Has to be reminded to get to work or to stay on task and often distracts others from doing their work. Does not make the attempt to try new learning experiences. | Is unruly and has to be corrected or spoken to often by teachers and staff. Has been referred to the office for his/her behavior.   |
| <b>U</b> | Always has problems working with group and causes problems with the group. Does no work in the group. Does not get along with others  | Does not turn in work on time. Does not bring books and agenda to class. Does not keep up with their belongings and keeping locker neat and orderly. Is not organized.  | Negative attitude  | Does not stay on task, does not try new learning activities.  | Is unruly and has to be corrected or spoken to constantly by teachers and staff. Has been referred to the office for his/her behavior.  |

- **Once a student has been assigned more than 15 days in In School Suspension (ISS), he/she may be viewed as a Chronic Disciplinary Problem and referred to a Student Review Committee (SRC) for suspension from Mossy Creek Middle School.**
- **Note: School administrators and/or designated representatives possess the authority to conduct a reasonable search of lockers, students, and their possessions while either on campus or at a school sponsored activity.**
- **Drug dogs are brought in a minimum of two times yearly to conduct random searches.**

## **DETENTION**

Detention obligations take priority over extracurricular activities and are not dependent on where students live or how they get to school-walk, ride bus or brought by parents. Students and parents are asked to be aware of the following information.

1. Detention will be held Monday-Friday during a students lunch time in room #621 except on days **before or after a school holiday. Each student will have the opportunity to eat a sack lunch provided by the school (student will be charged regular lunch price) or bring their own sack lunch from home.**
2. Students will report to detention at the beginning of their assigned lunch time and will remain in detention until their lunch time ends.
3. Teachers will monitor detention, which will be strictly an eating and reading time. If students fail to bring reading materials, they will be asked to leave and considered to have missed detention. (See #7 Below)
4. Students exhibiting inappropriate conduct will be asked to leave. Students assigned detention, but asked to leave for any reason, will be counted absent and penalized. (See #7 Below)
5. **IT IS THE STUDENT'S RESPONSIBILITY TO BE IN DETENTION. ALL STUDENTS and PARENTS ARE GIVEN A 24-HR. NOTICE.**
6. Students absent or having early dismissals on their day of detention will be required to fulfill their obligation on the day they return.
7. Students missing or forgetting detention will be required to provide a valid reason with verbal confirmation by parents (a note giving reason and a phone number). Failure to attend will result in additional days and/or assignment to In-School Suspension (ISS) in accordance with the following guidelines:
  - 1st day missed = 1 extra day of detention
  - 2nd day missed = 2 extra days of detention
  - 3rd day missed = ISS assigned
8. A student who is habitually tardy, is assigned repeatedly to detention, or consistently refuses to go to detention, will be assigned to In-School Suspension.
9. These guidelines apply to all students assigned to detention. It is important that students be punctual and responsible for their actions.

**Teachers may hold *Team Detention* as a consequence in the steps of their team's discipline plan. *Team Detention* is different from Detention assigned by the office.**

## DRESS CODE

1. Students shall not to wear **sweat pants (to include terry cloth, fleece, and velour/velvet material), athletic shorts, or leggings**. Wind suits are allowed.
2. Shorts, skirts, and dresses must touch the knee.
3. All shirts and/or jerseys must be tucked inside the pants.
4. **Underwear** of any kind is not to be worn as an outer garment and **must not** be visible.
5. Appropriate undergarments must be worn.
6. **Cut-offs, pants, or skirts** that are frayed, ragged or have holes are prohibited.
7. No **sagging-pants** may be worn. The waistband must encircle the body at the waist (at or above the hipbone) and the buttocks must be covered.
8. Pants cannot be worn with wide leg openings that cover the shoes. Pants cannot be rolled up or bound at the ankle with bands or strings. Students may not adorn their clothing with safety pins, excessive button pins, or studs of any kind.
9. Basketball jerseys may be worn with a T-shirt underneath.
10. No oversized jackets, hoodies, sweat shirts, or over shirts that fall below the buttocks are allowed.
11. Tank tops, layered tank tops, shirts with spaghetti straps or shirts that reveal any portion of undergarments are not permitted.
12. Students **may not** cover up any non-compliant clothing with a jacket, shirt, or sweater.
13. **Sleeveless shirts** are permitted if the shoulder is covered, the arm-holes are tight, and undergarments are not exposed. **Shirts must not cut in on the shoulder or back, expose the shoulder or back, or be cut low in the front.**
14. **Girls' shirts must be long enough so that when they raise their arms, their midribs are not exposed.**
15. Girls may be allowed to wear spaghetti strap or strapless dresses at the **Valentine's Day Dance** as long as the dresses are modest and undergarments can be worn without being exposed. **No back lace-up dresses or dresses that expose the back will be allowed, even if covered with a shawl.**
16. Students must refrain from wearing clothes that are **too tight or immodest** such as the wearing of female-cut pants by males.
17. Unconventional or un-natural hair coloring (including black) or styles is not permitted. **Mohawks are not permitted**. Carving and lines in the hair are not permitted.
18. Students may not dress in a color or style that associates them with an identified gang or group that could intimidate or make other students uncomfortable. This includes dressing in all black, "gothic" dress, and colors known to be associated with gangs.
19. Student may not wear any jewelry with metal spikes.
20. Students may not wear oversized belt buckles (2 inches or larger in length or width).

**Note: Dress Code Policies are enforced at all school related functions unless other notice is given. Final decisions and judgments concerning appropriate dress are made at the discretion of the administration. Students who violate dress code will be asked to call their parents for a change of clothing; if parents cannot bring appropriate clothing, the student will be placed in the In-School Suspension (ISS) classroom for the day. Students who arrive at school with unacceptable hair color or style may be placed in ISS until the color or style is corrected.**

## **IN-SCHOOL SUSPENSION (ISS)**

Some instances of serious rules infractions may result in students being assigned to the In-School Suspension (ISS) program. The ISS program at Mossy Creek is an alternative to home suspension and is staffed by a certified teacher. In addition, while in ISS, students have access to their instructors who monitor the progress of students daily. Students in ISS receive assignments that are the same or are equivalent to those being completed in their classes. When students are assigned to ISS, a copy of the rules and procedures are sent home. Should your child be assigned to ISS, please review in-depth with him/her the rules and procedures of ISS so that your child may perform successfully. Students who fail to uphold the rules of ISS will be given extra days and/or suspended home depending on the severity of their offense.

## **HOME SUSPENSION**

For infractions of the rules, disruptions, disobedience, or failing to carry out previously assigned punishment, students may be suspended home up to 10 days. While suspended home, the student will be counted as absent (unexcused) from school and will receive no credit for all missed work.

## **MOSSY CREEK ATHLETIC RULES AND REGULATIONS**

### **Practice:**

#### **Administrative Discipline**

- 1) Players who receive after-school detention will receive conditioning after practice. If the detention falls on the day of a game, athletes must provide their own transportation to the game, if necessary.
- 2) ISS- An athlete cannot participate in practice or in any games during their time in ISS. (This period begins from the moment they are assigned ISS until 2:45 of their last day.) Once returning from ISS, a player must attend one scheduled practice before they can participate in a game. A missed game will count as one scheduled practice, as long as the player attended the game with the team on the bench. Any athlete that receives ISS twice during one season will be removed from the team.

### **Dress:**

- 1) Proper attire for each sport must be worn.
- 2) Jeans or shorts with writing across the back may not be worn at any time.
- 3) No cleats are to be worn in the building.

If you have a question, or concern, please contact your child's coach at 988-6171; then press option #3, or contact **Mark Sams, athletic director, at 218-7543.**

## **Gator Discipline Card**

In order to involve our students and parents in the discipline process, each student will be given a Gator Discipline Card at the beginning of the school year and at the beginning of 2<sup>nd</sup> semester. This card will be in the front of their agenda (an example is below). The teachers will use this discipline card to help remind students of the expected behavior at Mossy Creek (this includes failure to complete assignments). Each time a student fails to follow the policy/procedures and/or fail to complete assignments, the student will receive a signature from a teacher. Once a student receives 6 signatures on his/her card for behavior and/or 3 signatures for failure to complete assignments, he/she will be referred to the office. After-school detention will be Monday, Tuesday, and Thursday from 2:50pm – 4:50pm. Students that receive no signatures will be rewarded with free time each grading period.

# GATOR DISCIPLINE CARD

HOMework / CLASSWORK 3 SIGNATURES = 1DAY AFTER SCHOOL DETENTION

HOMework / CLASSWORK 3 SIGNATURES = 1 DAY AFTER -SCHOOL DETENTION

|                                     |  |  |  |  |  |  |  |
|-------------------------------------|--|--|--|--|--|--|--|
|                                     |  |  |  |  |  |  |  |
| <b>BEING PREPARED FOR CLASS</b>     |  |  |  |  |  |  |  |
|                                     |  |  |  |  |  |  |  |
| <b>FOLLOW ALL SCHOOL RULES</b>      |  |  |  |  |  |  |  |
|                                     |  |  |  |  |  |  |  |
| <b>LISTEN AND FOLLOW DIRECTIONS</b> |  |  |  |  |  |  |  |
|                                     |  |  |  |  |  |  |  |
| <b>RESPECT OTHERS AND YOURSELF</b>  |  |  |  |  |  |  |  |

Students with no signatures will enjoy free time every 4 ½ week period.  
**Consequences:**  
 Each Signature: 1 day silent lunch  
**3 signatures – Parent contact**  
 6 signatures – Office referral  
**Every 3 signatures after 6 will be another office referral**  
 Lost card – Office referral

**Every 3 Homework/Classwork signatures will result in one  
 2 hour after school detention (M,T,TH)**

Parent Signatures  
 4 ½ weeks (with Progress report \_\_\_\_\_) 9 Weeks Signature with report card \_\_\_\_\_



**DR. JAMES R. HINES, JR., SUPERINTENDENT**

**BOARD MEMBERS**

DR. CHARLES M. (TOBY) HILL, VICE CHAIRMAN  
HELEN HUGHES  
DR. MARIANNE MELNICK

TOM WALMER, CHAIRMAN

SKIP DAWKINS  
JIM MADDOX  
FRED WILSON

**Right-to-Know Teacher Qualifications**

Guidance C-6 is for Advising Parents of the Right to Know Information about Teacher's Qualifications as required by The Elementary and Secondary Education Assistance Act of 1965 (ESEA) [Section 1111(6) (A)]

August 1, 2011

Dear Parent(s) or Legal Guardian(s):

Mossy Creek Middle School receives federal funds for Title I and/or Title II programs that are part of the Elementary and Secondary Education Act of 1965 (ESEA). We are very proud of our teachers and feel they are ready for the coming school year and are prepared to give your child a high-quality education. As a school receiving federal funds, we must meet federal regulations related to teacher qualifications as defined by ESEA. These regulations allow you to learn more about your child's teachers' training and credentials. We are happy to provide this information to you and will do so as quickly as possible. At any time, you may ask:

- a. Whether the teacher met state qualifications and certification requirements for the grade level and subject he/she is teaching;
- b. Whether the teacher received an emergency or conditional certificate through which state qualifications were waived, and
- c. What undergraduate or graduate degrees the teacher holds, including graduate certificates and additional degrees, and major(s) or area(s) of concentration.

You may also ask whether your child receives help from a paraprofessional. If your child receives this assistance, we can provide you with information about the paraprofessional's qualifications.

The staff of Mossy Creek Middle School is committed to helping your child develop the academic knowledge and critical thinking he/she need to succeed in school and beyond. That commitment includes making sure that all of our teachers and paraprofessionals are highly skilled.

If you would like to request this information, please contact Paige Busbee at Mossy Creek Middle School at 478-988-6171 or email [paige.busbee@hcbe.net](mailto:paige.busbee@hcbe.net).

Thank you for your interest and involvement in your child's education.

Sincerely,

Paige Busbee  
Principal

**Student Schedule**

**Student Schedule Page** - Use this page to record your children's teachers.

Class Schedule: \_\_\_\_\_ Locker # \_\_\_\_\_

Teacher

Time

Homeroom Teacher \_\_\_\_\_

Language Arts \_\_\_\_\_

Math \_\_\_\_\_

Science \_\_\_\_\_

Social Studies \_\_\_\_\_

Advisement \_\_\_\_\_

Connections \_\_\_\_\_

Connections \_\_\_\_\_

Lunch \_\_\_\_\_